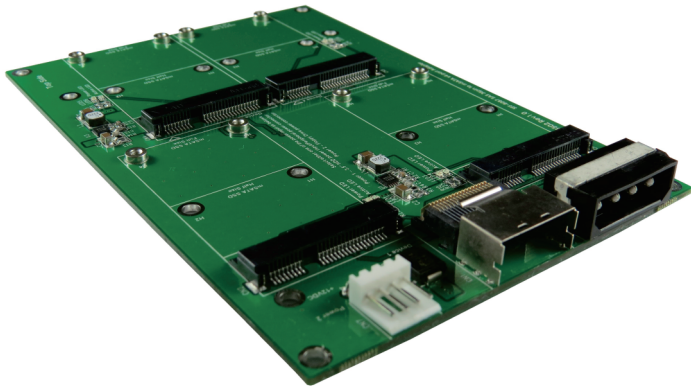
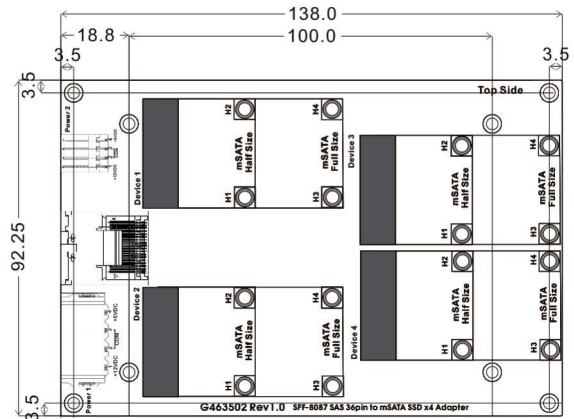


# SATA III SFF-8087 to mSATA SSD x4 Adapter



## Dimensions (unit:mm)



## Order Information

Part No.	S4025A
Description	SATA III SFF-8087 to mSATA SSD x4 Adapter

## Features

- Build in Mini PCI-e 52pin Female connector
- Green LED indicates power status
- Red LED indicates active status
- 4 Layer PCB Designed to reduce noise coupling

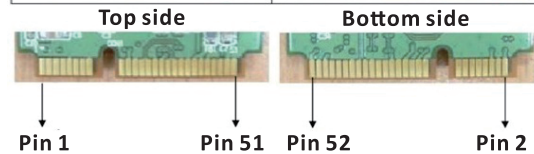
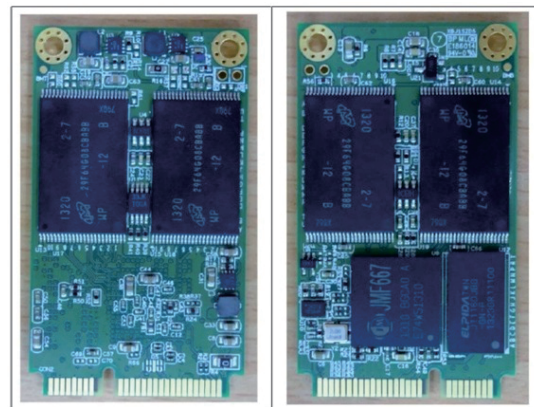
## Specifications

- Support SATA Reversion 3.2
- PCI Express Mini Card Electromechanical Spec. 1.2
- PCI-E Card Electromechanical Spec. Revision 1.1
- PWM synchronous buck converter Power IC
  - 3A maximum output current
  - Short circuit protection
  - In-rush current suppression
  - Thermal shutdown protection
  - ESD HBM (Human Body Mode)/2KV

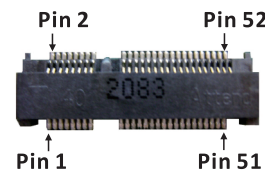
## Support mSATA SSD Form factor

- Half size mSATA : 26.8mm(L) x 30mm(W)
- Full size mSATA : 50.95mm(L) x 30mm(W)

## mSATA 52pin golden finger



Device connector : mSATA 52pin golden finger



mSATA 52pin connector